

club aavkar, lonavla

Krishnan Parvez Architects > Projects > All > Favorites > club aavkar, lonavla

CLUB AAVKAR

Clubhouse – Aavkar residential complex.

Scale

18,000 sq.ft.

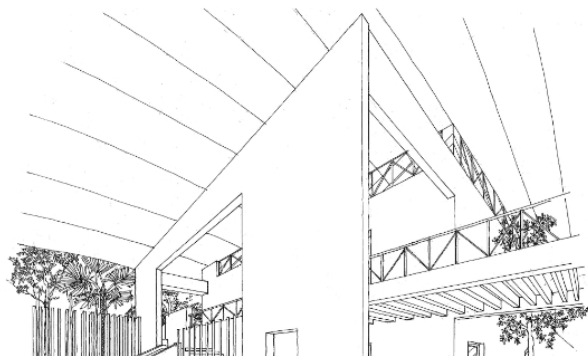
Status

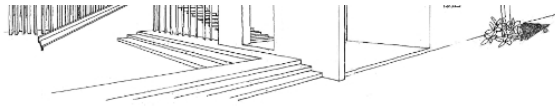
Proposed

Location

Lonavla

SHARE PROJECT





Contact Us

shop no.5, krishna bldg., st. anthony street, kalina, santacruz (e), mumbai – 400 098. | +91 22 6702 4521/ +91 22 6702 4522 | projects@kpa.in
