

homstead gardens condominium, mumbai

Krishnan Parvez Architects > Projects > All > Residential > homstead gardens condominium, mumbai

HOMESTEAD GARDENS

The plot on which this 14 storeyed residential building was built previously had a 110 year old villa with bougainvillea all over the old structure and its surroundings. A small part of the bougainvillea on the compound wall facing the road was spared and retained to be a part of the new premises. The colours of the bougainvillea were used on the building as an ode to the landscape that had enveloped the old villa.

Scale

32,500 sq.ft.

Status

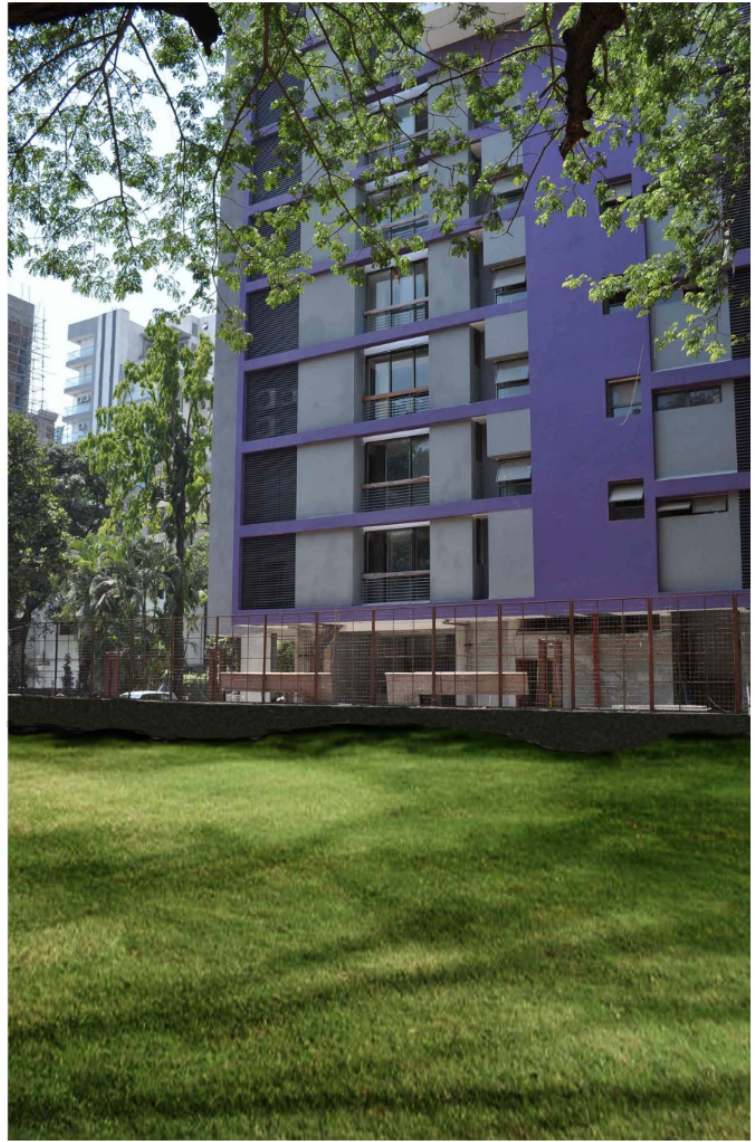
Completed

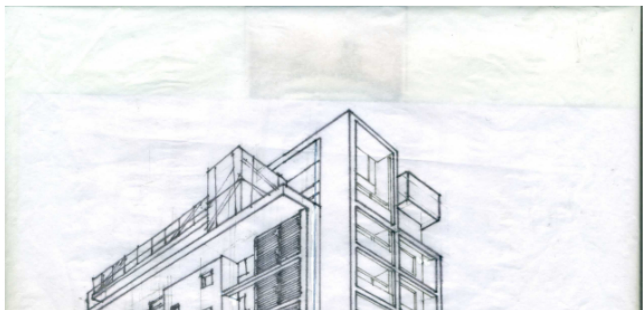
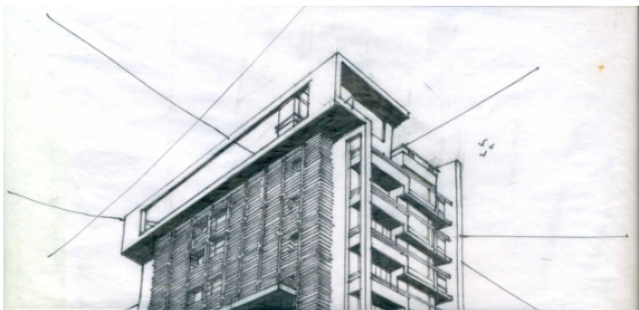
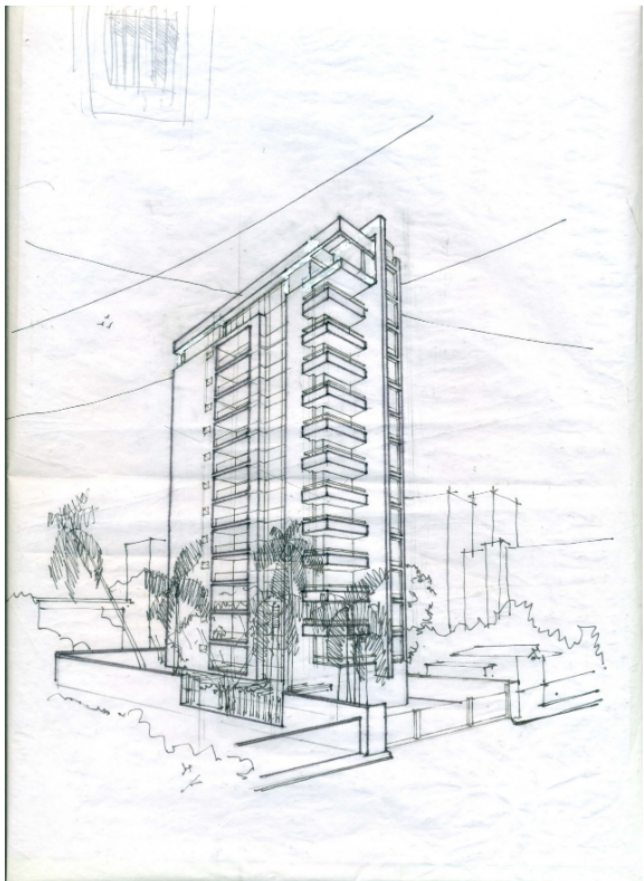
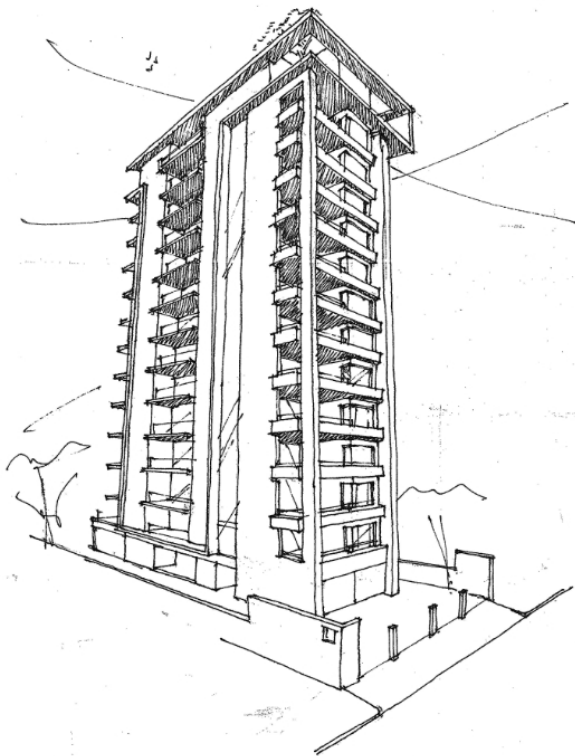
Location

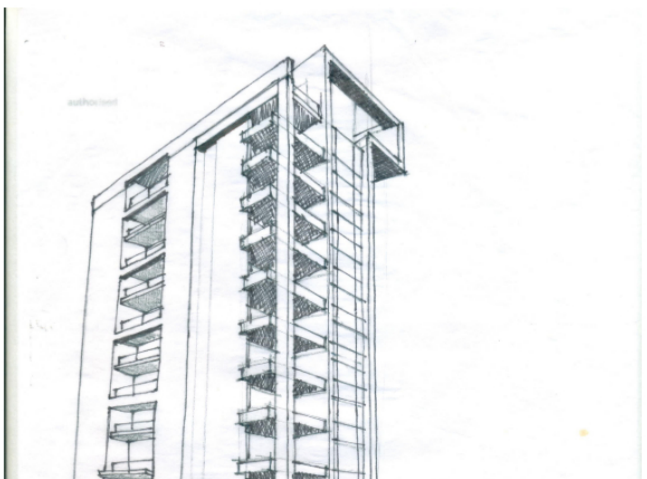
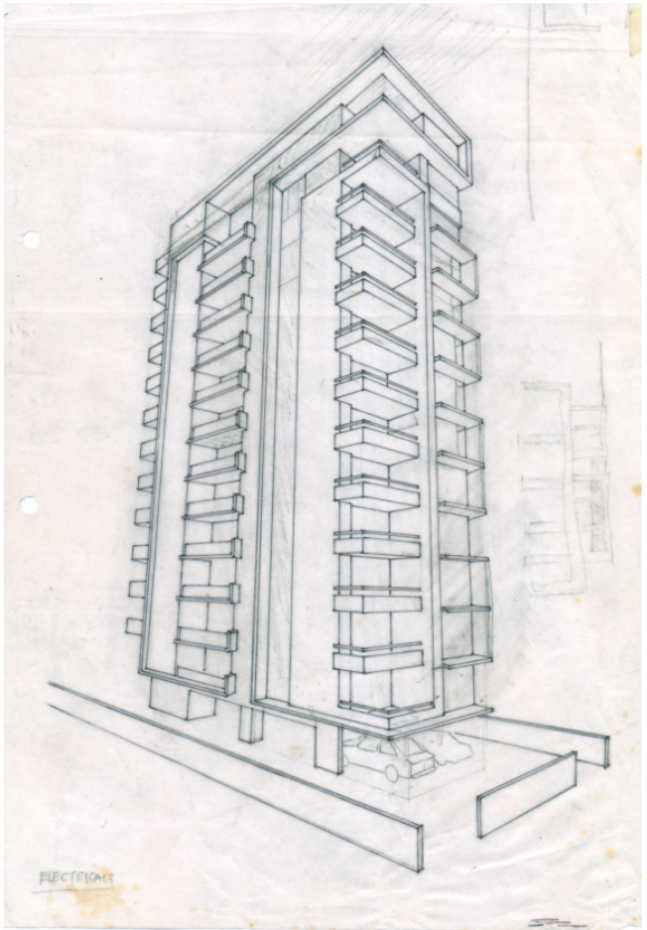
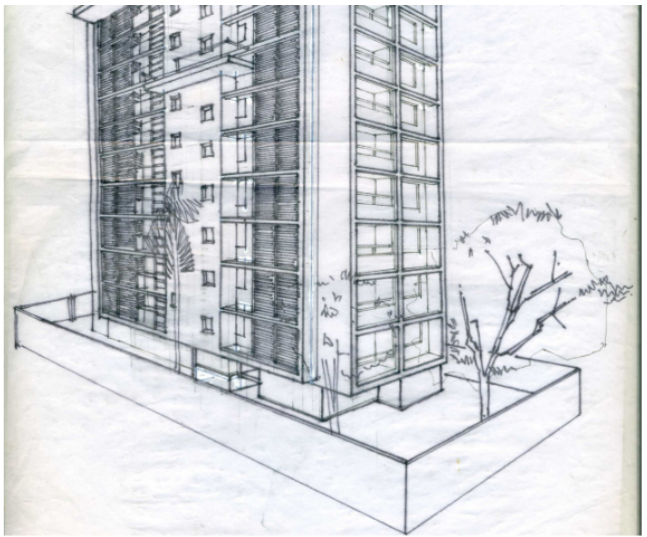
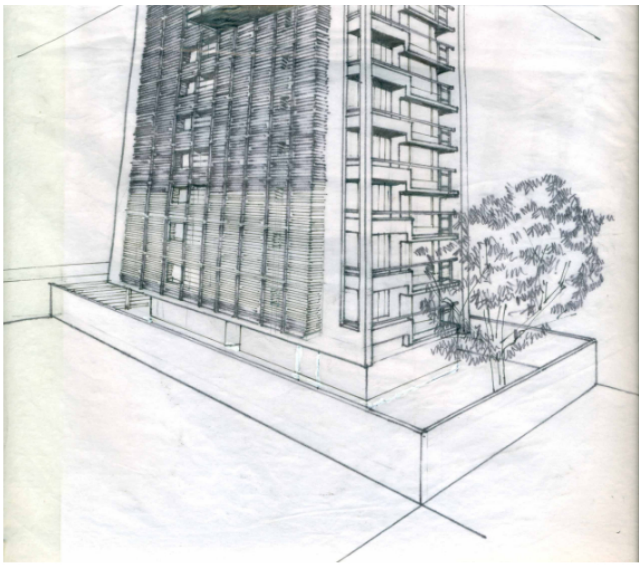


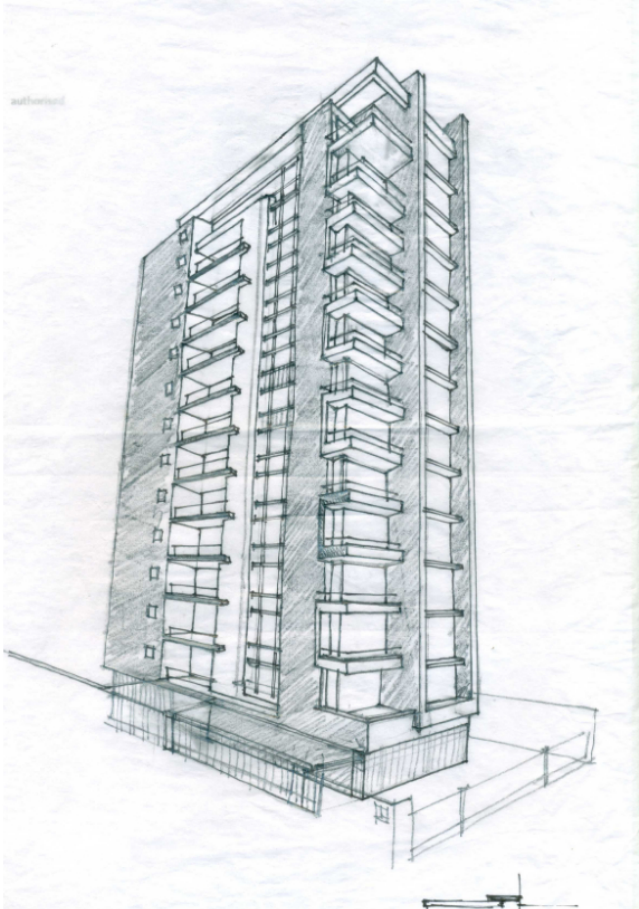
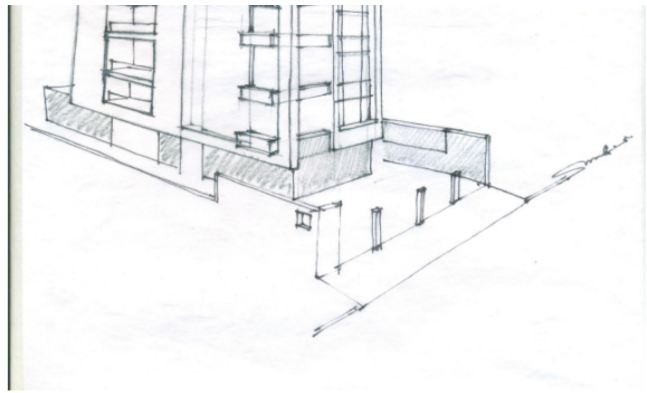
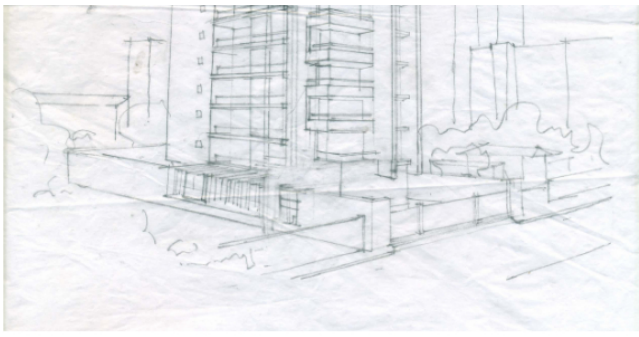
Santacruz W, Mumbai.

SHARE PROJECT









Contact Us

shop no.5, krishna bldg., st. anthony street, kalina, santacruz (e), mumbai – 400 098. | +91 22 6702 4521/ +91 22 6702 4522 | projects@kpa.in