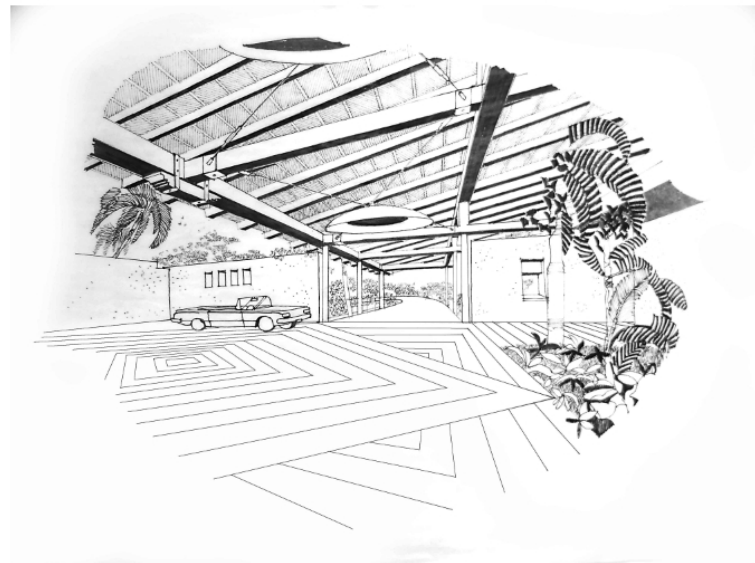


Krishnan Parvez Architects > Projects > All > Residential > house on ecr, kannathur, chennai

HOUSE ON ECR

A 5 acre property sharing one length of the square plot with the ECR beach in Kannathur, outskirts of Chennai. A single line brief from the client demanded an ocean view from every space of the house. Naturally, the house elongated into a linear layout parallel to the waters edge. Entering the house at a higher level was an obvious choice to catch the horizon view. However, it was planned as a surprise view after the long winding drive through the thickly vegetated driveway ramping up to the porch. A series of staggered parallel walls makes the visitor walk between them to reveal the view of the horizon beyond an infinity edge water body across the corridor/ vestibule. Bedrooms and bathrooms were oriented to get maximum privacy at the same time looking at different sections of the ocean. The home office and the home theatre rooms were planned towards the rear with their personal courts. An infinity edge swimming pool at the mid level with a slide connecting from one of the master bedrooms was located over the staff quarters. Most of the spaces being oriented towards the wind flow ensured that the semi enclosed common areas were well ventilated and kept cool with the water bodies around. The beach was pulled into the plot towards the house by introducing sand and partially paved patios. A wide green shrub wall created privacy at the



ground level and added the required safety from intruders on the public beach.

Scale

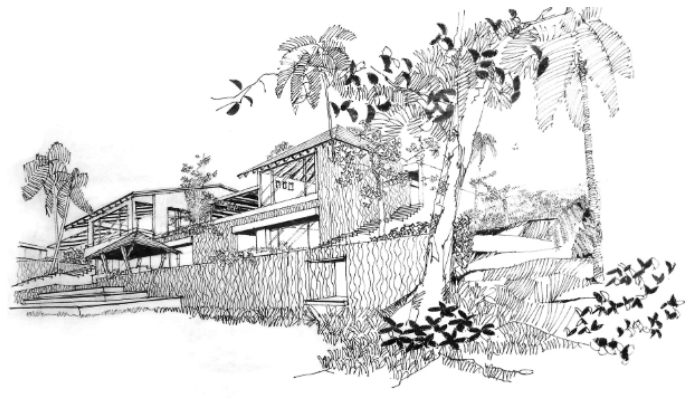
30,000 sq.ft.

Status

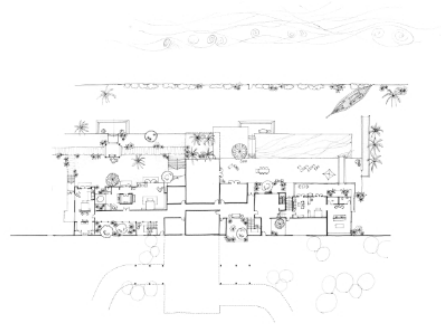
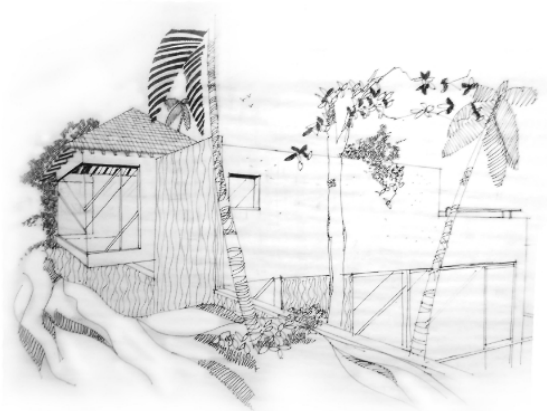
Proposed

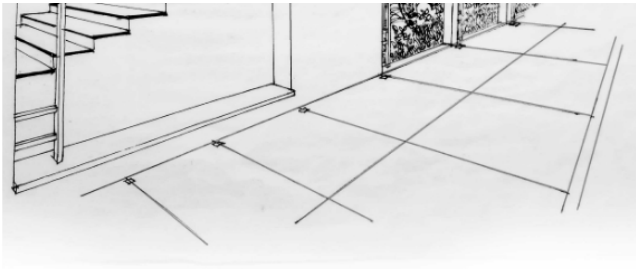
Location

Kannathur, Chennai



SHARE PROJECT





Contact Us

shop no.5, krishna bldg., st. anthony street, kalina, santacruz (e), mumbai – 400 098. | +91 22 6702 4521/ +91 22 6702 4522 | projects@kpa.in