

kiran jewellery, mumbai

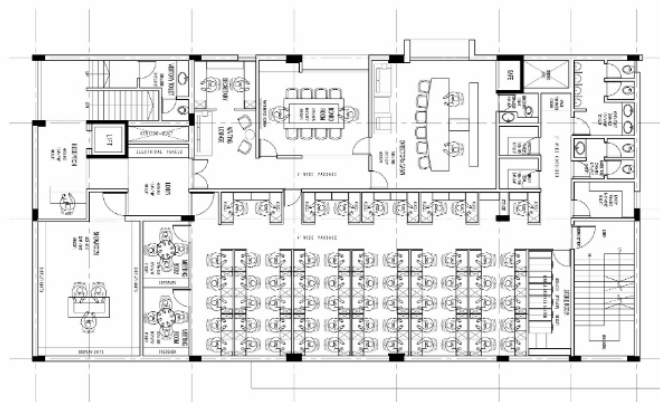
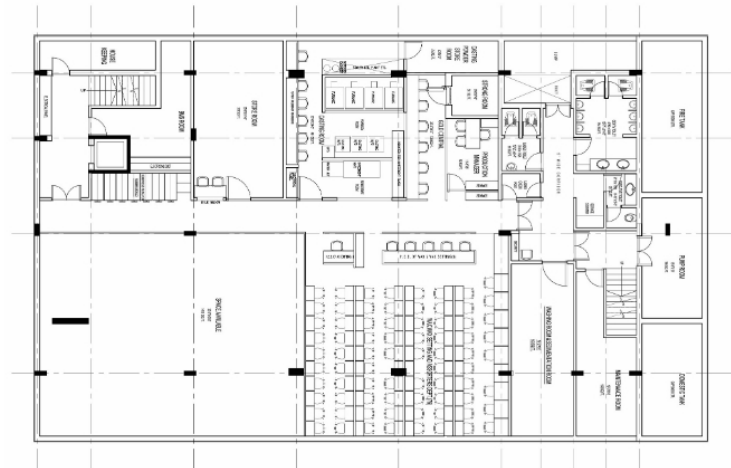


Krishnan Parvez Architects > Projects > All > Industrial > kiran jewellery, mumbai

KIRAN JEWELLERY

jewellery factory + corporate office - kiran jewellery limited

A factory-cum-office building located on a rectangular plot at one of the road junctions, within the special economic zone, was planned to propose a jewellery factory for an ever increasing demand of jewels to cater large export volumes. A very functional highly secured building yet appealing to their international visitors was considered as a design brief. The blank facades of the building with smaller fixed glass pane fenestrations like fortress in appearance defined its image of being secured. The building was distinctly separated internally for visitors and staff entry/exits passing through a high level of surveillance and protocol checks at the ground floor level. The factory was planned as multi-storey four level structure including basement with two sets of staircases diagonally located at the ends of the building. Upper levels constituted of the various factory functions with the top level being connected directly from the lobby through an elevator housing the top management offices, meeting rooms and part factory zone. The



basement consisted of storage facilities and

future factory extension. The logistics and inventories of the factory, also, were accessed through the ground floor level.

Scale

35000sq.ft

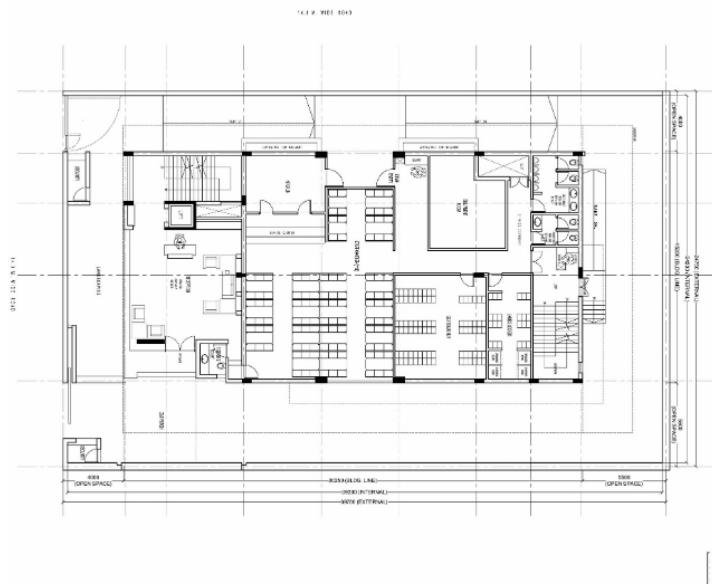
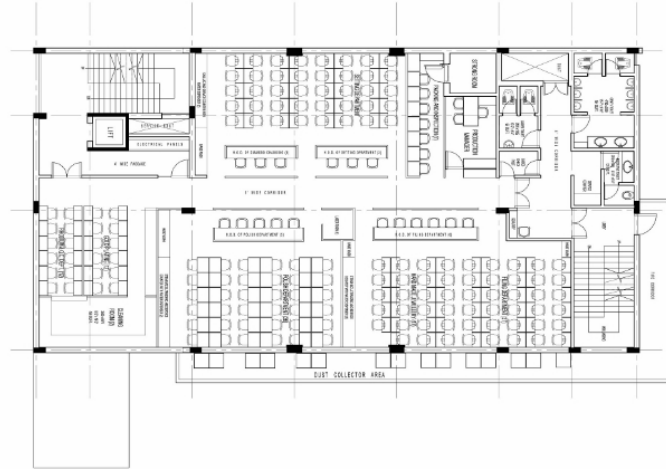
Status

proposed

Location

Andheri, Mumbai

SHARE PROJECT



Contact Us

shop no.5, krishna bldg., st. anthony street, kalina, santacruz (e), mumbai – 400 098. | +91 22 6702 4521/ +91 22 6702 4522 | projects@kpa.in

KPa © 2019 ALL RIGHTS RESERVED

powered by HARBIRZINC.